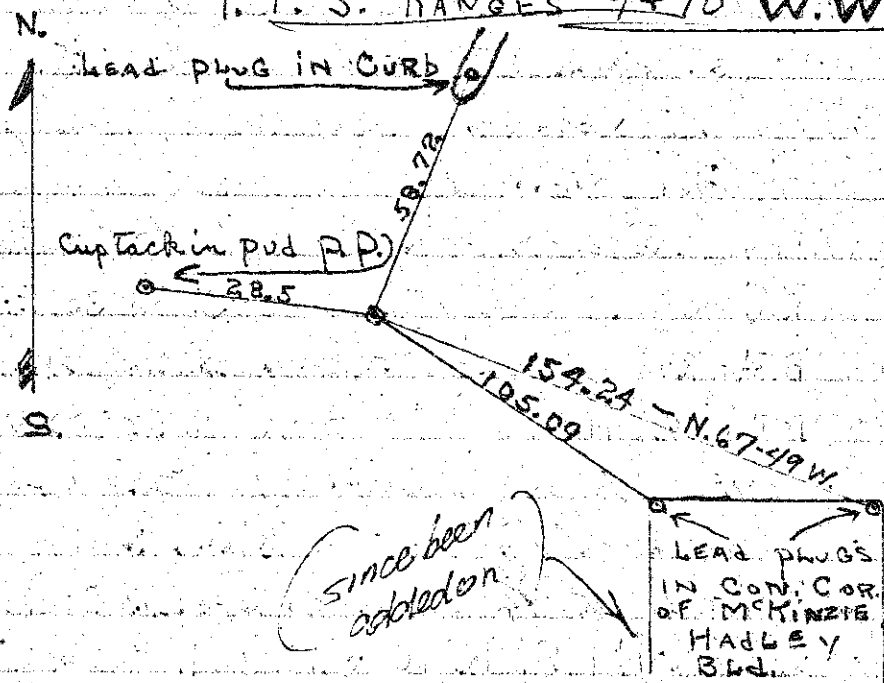


REWITNESS OF 1/4 COR. ON N. SIDE OF SEC 11  
T.3.S.R.10.W.W.M.

★ Found old COR. POST MARKED 1/4 WHICH WAS SET BY U.G. JUDSON? IN 1913. OLD TREES IN BAD CONDITION. SET NEW COR. POST AND MADE NEW B.T. 18" HEM BEARS N. 35° W. 11.0'  
14" " " N. 67° E. 19.0'

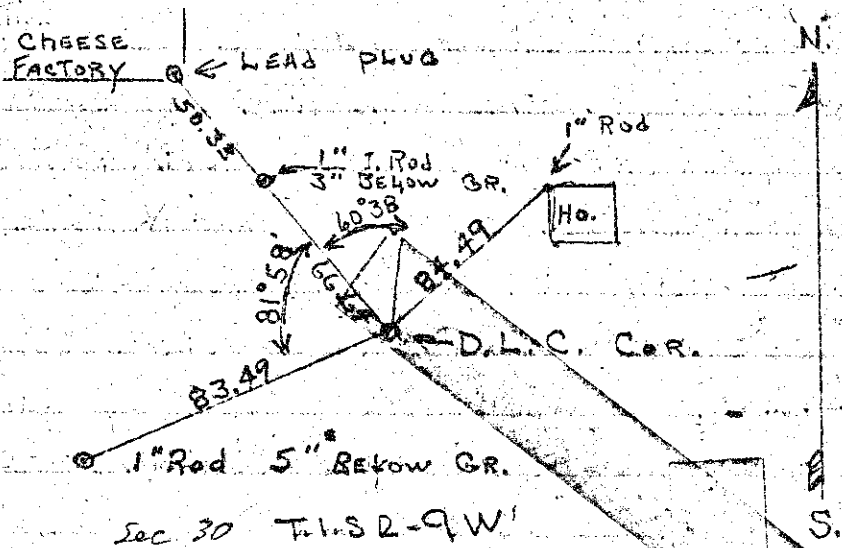
IN PRESENT OF W.E. ANDERSON + Bud SMITH  
July 15, 1950

★ WITNESS OF SEC. COR. SE, SW, NE, NW  
T.1.S. RANGES 9+10 W.W.M.



IN PRESENTS OF W.E. ANDERSON + FRANCIS L. SMITH

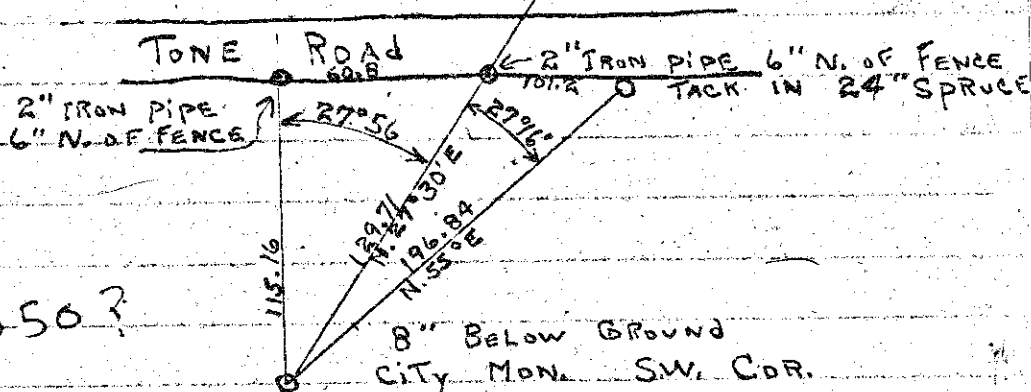
★ WITNESS OF S.E. COR. OF Edrick Thomas D.L.C



Sec 30 T.1.S.2-9W

S.W. COR. OF TILLAMOOK CITY

DUG + UNCOVERED MONUMENT, MADE WITNESSES AS IN DRAWING. T.1.S.10.W



+ 1950?

IN PRESENTS OF W.E. ANDERSON + FRANCIS L. SMITH

★ REWITNESS OF SEC. COR. 16, 17, 20, + 21. T.2.S.R.9.W.

W.M. AT FOSSBINE PLACE ON TILLAMOOK RIVER. Found ROTTED REMAINS OF LARGE SPRUCE (B.T.) WHICH IS ONLY LARGE SPRUCE IN VICINITY - DISTANCE + BEARING CHECK WITH OLD FENCE LINE, ALSO IN RELATION TO RIVER, CONSIDERING SLIGHT BANK WASH BY RIVER. NEW B.T. ARE,

14" ALDER BEARS N. 10° W. - 21.2

LEAD PLUG IN ROCK BEARS N. 32° E 44.00

ROOT OF 48" SPRUCE BEARS S. 34° W 50.4

IN PRESENTS OF W.E. ANDERSON + FRANCIS L. SMITH

★ WITNESS OF SEC. COR. SE, SW, NW, NE T.2.S.R.10.W

CORNER - 2" IRON PIPE, STANDING 30" ABOVE GROUND

FROM WHICH A 8" ALDER BEARS S. 65° E. - 80.8 FEET

16" FIR BEARS S. 21° W. 280. FEET

14" FIR BEARS S. 65° W 323.4 FEET

IN PRESENTS OF W.E. ANDERSON + FRANCIS L. SMITH

★ WITNESS OF 1/4 COR BETWEEN SEC. 25 + 36

T.2.S.11.W.W.M.

CORNER - 3/4" PIPE 3 1/2 FT. LONG, 2 FT. IN GROUND

A 10" SPRUCE IS SCRIBED "1/4 S-B.T." + BEARS

N. 67° E. 20.1 FEET

IN PRESENTS OF GALE ADAMS - JUNE 27, 1950 and W.M. MARKHAM